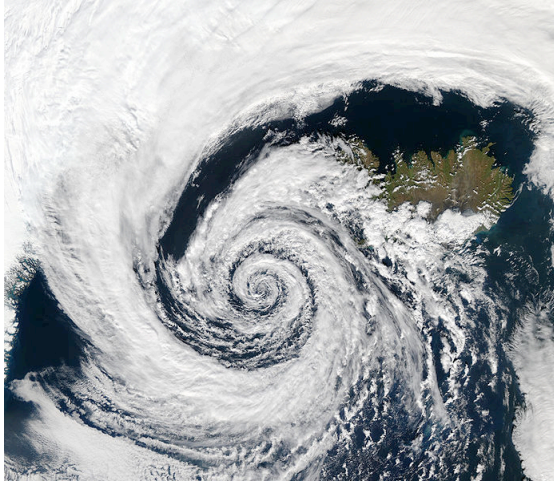


SANCTUM



MINI PROJECT 4 – CYCLONE MATT

“Earth can be considered as an interconnected system of living, patterned organisms with an immense ability to regenerate and recover balance. This behaviour is intriguing and at times intruding, especially when nature unleashes its generative might in the form of the natural disaster... The weight of the industrialized and over populating human race is deteriorating nature’s ability to sustain a self-generating organic Earth. Perhaps natural disasters – fires, tidal waves, earthquakes, cyclones, avalanches, etc are nature’s method to return balance at a devastating scale...” – Extract from Phillip Adams and Matthew Bird’s Dancehouse Residency Application

ISSUE Thurs 12th August

BRIEF

Speculate and document how an inward spiralling cyclone of immense energy would devastate your tree house, eucalyptus and surrounding area. So powerful that it would uproot and ravage everything in its path.

Produce mappings, diagrams, drawings, and imagery to represent before, during and after the event. Be specific to how your particular tree house would deteriorate, breakup, obliterate due to the intensity of the cyclone. Consider your tree houses material and structure – speculate how the spiral energy will affect and relocate.

With the material debris from your tree house, eucalyptus and perhaps items from the adjacent ravaged context, design a stronghold shelter, a sanctum on the exact location of the original eucalyptus... a shelter that has adapted to the new environmental conditions and could withstand a future cyclone.

DELIVERABLES

Curate a body of information that best represents your speculation and design, including mappings, diagrams, design drawings (various plans, elevations, sections, details), models, pattern studies, experiential imagery, etc. Drawings ranging between 1:1 to 1:50.

WORKING STUDIO SESSION

Mon 16th August & Thurs 19th August – Bring drawing & model making equipment/ material to class, reference material anything you may think you’ll need to best make use of a productive session.

CLASS PRESENTATION

Mon 24th August – Work must be pinned to the wall (A3 landscape) and models presented on podiums and or rendered images.