



EXPLICIT CONTENTS

Choreography: Rhiannon Newton

Performers: Ivey Wawn, David Huggins

Sound: Peter Lenaerts

Lighting: Karen Norris

Costume: Agnes Choi

The edge of the body has disappeared; the environment has seeped inside and come to live amongst body parts; the nervous system feels its way far beyond the skin.

[Explicit Contents](#) tells hyper-real stories about the contents of two bodies as they are made and remade by the materials and forces of their environment. Burning and cooling, hungering and satiating, incorporating and expelling, the body becomes an explicit site of action and exchange. Featuring dancers, Ivey Wawn and David Huggins, and composition by Peter Lenaerts (Brussels/Sydney), *Explicit Contents* is a visceral journey through the body's entanglement with the environment. Reimagining bodies as watery vessels, techno-chemical conglomerates and thermo-dynamic machines, the work asks how do the ecologies of the world continue inside and outside of the body.

★★★★½ *"Deeply considered and deeply gratifying. Leaves a palpable residue in your body"* (Arts Hub)

★★★★½ *"Darkly surreal. Full of dream-like and disconcerting effects"* (The Age)

"So various, so beautiful, so new... Borders on magic" (TOND)

[Further Reviews](#)

[Video](#)

[Photos](#)

Explicit Contents was commissioned and produced by Campbelltown Arts Centre and premiered at Sydney Festival 2021. Explicit Contents has been supported by the Australian Government through the Australia Council for the Arts and the NSW Government through Create NSW. Explicit Contents toured to Sydney Dance Company, Dancehouse Melbourne, and Gorman Arts Centre in 2022.

rhiannonlnewton@gmail.com

+61428660369

<http://rhiannonnewton.com/>

Project Idea:

Explicit Contents was born from my desire to emphasise how bodies are not separate from, but inextricably connected to their environments. The work is broken into eight sections. Each amplifies a different material or energetic connection between the body and the world, such as the absorption and expulsion of watery substances, and the consumption and output of chemical and kinetic energy. The work seeks to sensitise audiences to the visceral and sensuous nature of these connections, encouraging them to feel, in an embodied manner, how deeply humans are connected to and dependent on ecologies that extend far beyond the body.

Venue Requirements:

- Small-medium black box theatre
- Lighting rig (specs provided)
- Sound system with sub (specs provided)
- High-shine black flooring (TBN)
- Bare walls preferred to drapes

Artist Provides:

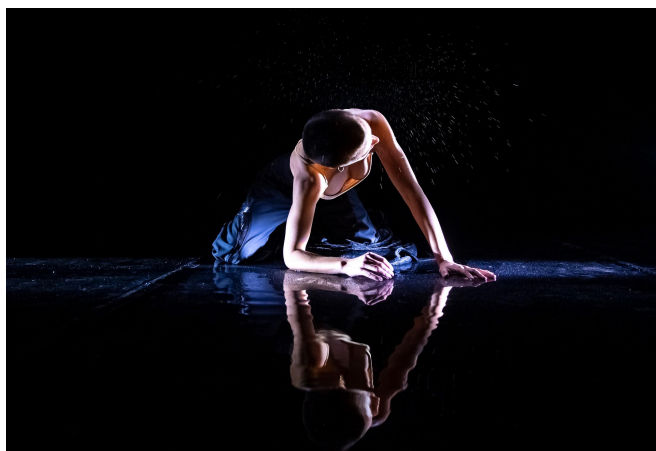
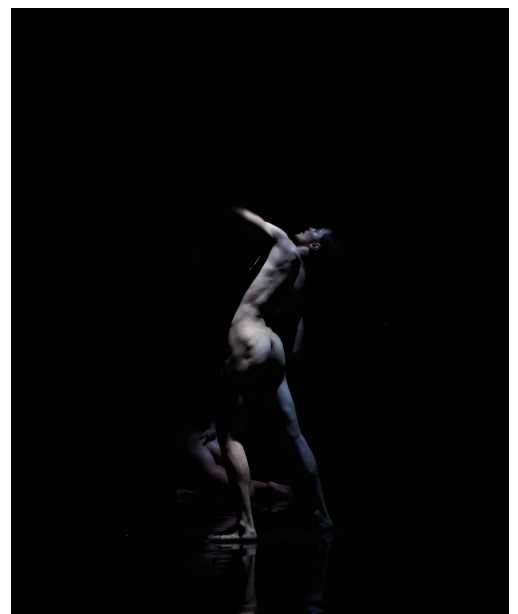
- All Props: 2 x glass vessels; 2 x 2L mechanised water droppers (to be rigged); 2x radio microphones; 2 x blankets; required number of mangoes and passionfruits (season depending)..
- Costumes
- LX and AX operator

Touring Party:

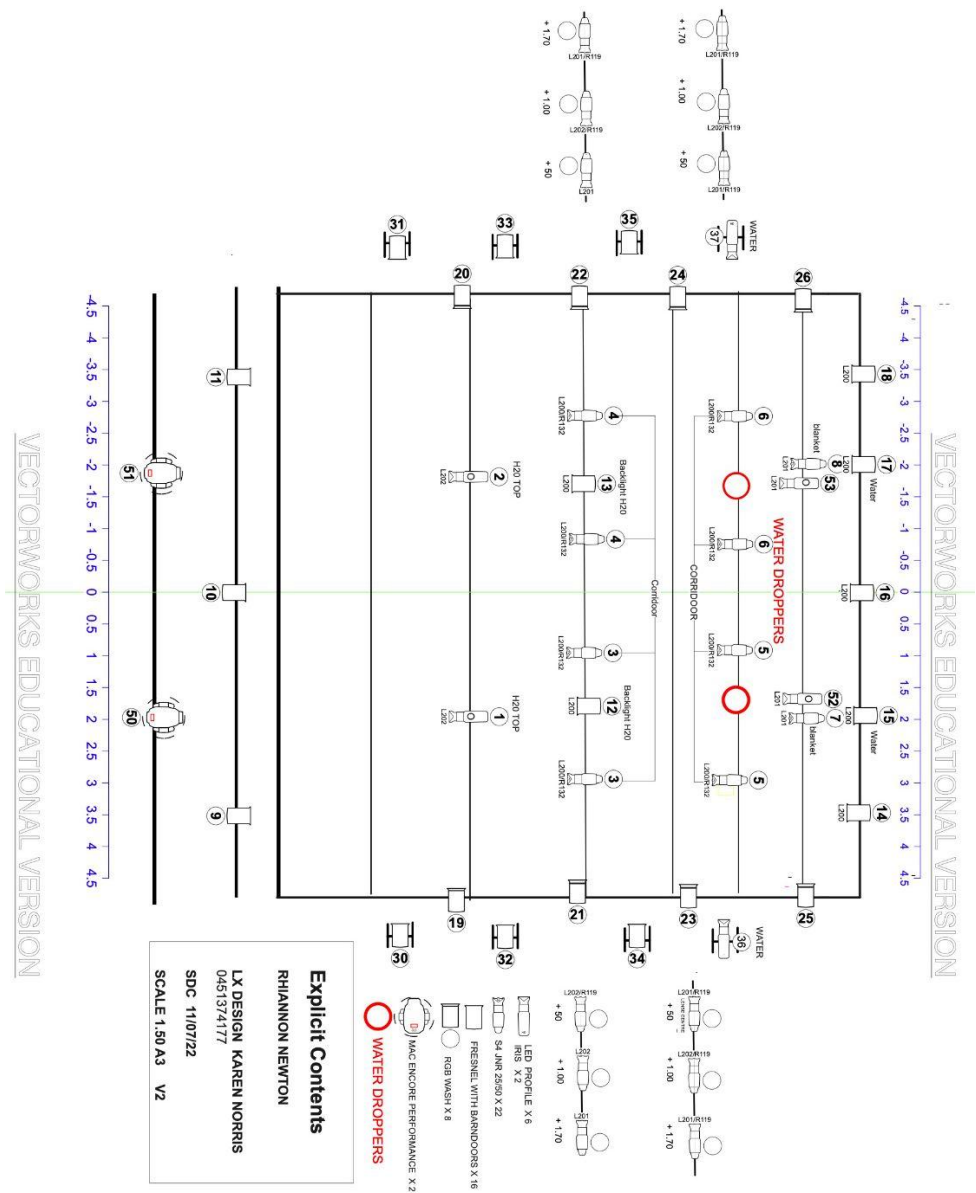
- 4-5

Duration:

- 55min



Lighting Specs



Audio Specs:

Speakers:

- 2 speakers at the back of the stage
- 2 speakers at the FOH position
- 2 speakers to the side of the audience, in the middle
- 1 sub speaker, under seating bank

Mixer:

Set up in the middle of the back row of the audience

Inputs:

- 1-6: soundcard/computer (artist provides)
- 7-8: microphones (artist provides)

Output:

- Master output can be the FOH
- Bus 1-2: back speakers
- Bus 3-4: side speakers
- Bus 5: Sub

Routing:

- Input 1-2 goes only to FOH
- Input 1-2 goes only to output 1-2
- Input 3-4 goes only to output 3-4
- Input 5 goes only to output 5