

DANCEHOUSE D/

PERFORMED IN-SEASON 2026

Production Information + Specifications



Sync Well

by gemma+molly

Premiere Season at Dancehouse 18-21 February, 2026

<https://www.dancehouse.com.au/whats-on/sync-well/>

— *collecting, recollecting and collectivising*

ABOUT THE WORK

Flute, Bottle, Performer – each mouth a container, a leaky Well. Bodies separate, and together: Ready. A dreamlike dislodgement of sound~ing and face~ing, edging towards something or nothing, holding and beholden to the real and imagined occurrences at work.

Water, welling and accumulating, weighty with wishes, passes between gargling containers. Mouths are coated with the wishes of others: they collect, recollect and collectivise.

Sync Well refrains from unfolding, instead folding in on itself to reveal its mechanisms; mechanisms for togetherness.

CREDITS

Choreographers and Performers Gemma Sattler and Molly McKenzie

Sound Designer April Guest

Lighting Giovanna Yate Gonzalez

Dramaturg Grey Dear

RESPONSES

★★★★ — ‘It’s serious and inwardly focused and weird in the best sense.’ — Andrew Fuhrmann, *The Age*

‘To watch Molly and Gemma is to enter a collaboration defined by what they call ‘shitty magic’, a low-fi alchemy where trickery, synchronicity, and the somatic dislodgement of the body collide.’ — Isabella Hone-Saunders, *The Mouth as a Well, The Loop as a Promise*, FIELD Notes

https://www.dancehouse.com.au/wp-content/uploads/2026/03/FN_Sync-Well_gemmamolly.pdf

ASSETTS

Videography Cobie Orger

Photography Gregory Lorenzutti

DOCUMENTATION

Full Length Archival - <https://vimeo.com/1176406010/9bf90771e6?share=copy&fl=sv&fe=ci>

Trailer - <https://vimeo.com/1176378380?share=copy&fl=sv&fe=ci>

ACKNOWLEDGMENTS

The premiere of Sync Well (2026) was commissioned and produced by Dancehouse. This project was supported by Lucy Guerin Inc. (studio residency), Temperance Hall (studio residency) KINGS Artist-Run, and FELTspace.

WARNINGS

Sudden Loud Noises

ARTIST/PRODUCER CONTACT

gemma+molly
Gemma Sattler and Molly McKenzie
gemandmolly@gmail.com
<https://gemandmolly.cargo.site/>

BIOS

GEMMA SATTLER Choreographer and Performer

Gemma Sattler is a Naarm-based performer and choreographer, primarily working from an artistic partnership with Molly McKenzie under the moniker gemma+molly.

Their work has been presented across Australia at FELTspace (2025), KINGS Artist-Run (2025), PICA x STRUT Dance (2024), Dancehouse (2023), Temperance Hall (2023), and has been supported by Lucy Guerin Inc. and the Ian Potter Cultural Trust.

Gemma's practice has been informed by her work as a performer for leading artists Sarah Aiken, Alicia Frankovich, and Angela Goh – notably during the acquisition process of Goh's work *Body Loss* for the permanent collection of the University of Melbourne's Art Museums, seeing Gemma perform *Body Loss* at Buxton Contemporary (Melbourne 2024) and Museo Experimental el Eco (Mexico 2025).

MOLLY MCKENZIE Choreographer and Performer

Molly McKenzie is a performer and choreographer working on Wurundjeri country, Naarm/Melbourne.

Molly primarily works from the artistic partnership, gemma+molly, with Gemma Sattler. Utilising the potential of choreography as a structure independent of dance, they devise performance that choreographs attention, space and bodies, both animate and inanimate.

Molly graduated with a BFA from the Victorian College of the Arts (2021). Her work has been presented at FELTspace (2025), KINGS Artist-Run (2025), PICA x STRUT Dance (2024), Dancehouse (2023), Temperance Hall (2023), and has been supported by Lucy Guerin Inc and the Ian Potter Cultural Trust.

Molly has recently worked with Angela Goh during the historic acquisition process of Goh's work *Body Loss* for the permanent collection of the University of Melbourne Art Museums. Within this process, Molly has undertaken the role of performer at Buxton Contemporary, Naarm (2024), and choreographic installer at Museo Experimental el Eco, Mexico City (2025).

GIOVANNA YATE GONZALEZ
Lighting Designer

Giovanna Yate Gonzalez is a Colombian-born dancer turned lighting designer based in Australia. A VCA graduate, she has worked on acclaimed projects like Siren Dance (Sydney Dance Company) and the Fringe award-winning LUSH. In 2023, she joined Malthouse's Besen Artistic Program and, in 2024, was Associate Lighting Designer for Amelia Lever-Davidson on The Children's Bach. Known for blending movement and light, her work includes Flesh Vessel (Dance X, FESTIVAL, 2025). Giovanna was part of Melbourne Theatre Company's FUTURE CREATIVE program, continuing to illuminate Naarm's stages.

APRIL GUEST
Sound Designer

April Guest is a Naarm-based beatboxer, vocalist, performer, sound designer, and creative coder. Their practice explores the expansive possibilities of the human voice through organic and technological means, spanning live looping performance, installation, and produced music. April has presented work with Liquid Architecture, Now or Never, New North, and Make It Up Club, and releases electronic music under the alias Byte Crusher.

GREY DEAR
Dramaturg

Grey Dear is an interdisciplinary artist and discursive practitioner with special interests in collectivity, ecosomatics and perceptual experience. Coming from a dance background, Grey employs choreographic thinking and embodied approaches across the diverse tendrils of their practice. They create sensorially and intellectually engaging experiences, whether it be an experimental talk, action in a gallery, performance in a theatre or outdoor engagement in a public setting. Grey is an Artistic Director at Blindside Gallery, runs public program, On The Table, at Dancehouse, and has presented work at numerous theatres, galleries and festivals across Naarm and Stockholm.

TECHNICAL SPECIFICATIONS

Sync Well is a 50 minute choreographic work, created and performed by the duo gemma+molly (Gemma Sattler and Molly McKenzie). Sync Well is designed for a theatre context with white flooring and a U-shaped seating configuration, with the ability to adapt to alternative indoor performance spaces (subject to negotiations with the artist).

TOURING PARTY

Gemma Sattler - Choreographer and Performer (Naarm/ Melbourne)

Molly McKenzie- Choreographer and Performer (Naarm/ Melbourne)

STAGING

- **Minimum Stage Dimensions:** 10x6m*
- **Minimum Grid Height:** 4.6m*
- **Seating Configuration:** Two possible configurations: end-on seating bank or U-shaped configuration
- **Flooring:** White Tarkett*
- **Set:** 1x white plinth (70x70x70cm) to be sourced by the presenter*

*Please consult the artist directly if your venue has different dimensions or material availabilities. Variations and/or alternatives are possible.

LIGHTING

Fixtures

- 2x ETC source4 36Deg (can be any profile fixture)
- 10x Philips Shoreline LED Par 155 (all with barn doors)
- 4x LED strips (2m in length)
- Channels 100 through 102 are HLX (Adaptable to the stock of the venue)

Control

- Lighting Console (preferable ETC/ Designer has ETC Nomad in case)

NB: Depending on the venue stock and venue dimensions, the lighting designer may edit the lighting plan to improve the rig.

AUDIO

The venue should provide a Left, Centre and Right speaker configuration with independent sends to each. Other configurations can be accommodated depending on audience layout/performance area

- 1x Subwoofer - Placed on stage, pointed at the audience. Independent send
- 2x hand-held corded microphones (Adaptable to the stock of the venue)
- 1x Macbook Pro with a Qlab Audio License
- 1x Soundcard - Behringer u-phoria umc1820 or similar to be provided

PRESENTER PROVIDES

- White Tarkett
- 2x hand-held corded microphones
- White plinth (70x70x70cm), or substitute structure, eg. step ladder, small rostra, smaller plinth (used as set element)
- Dressing Room

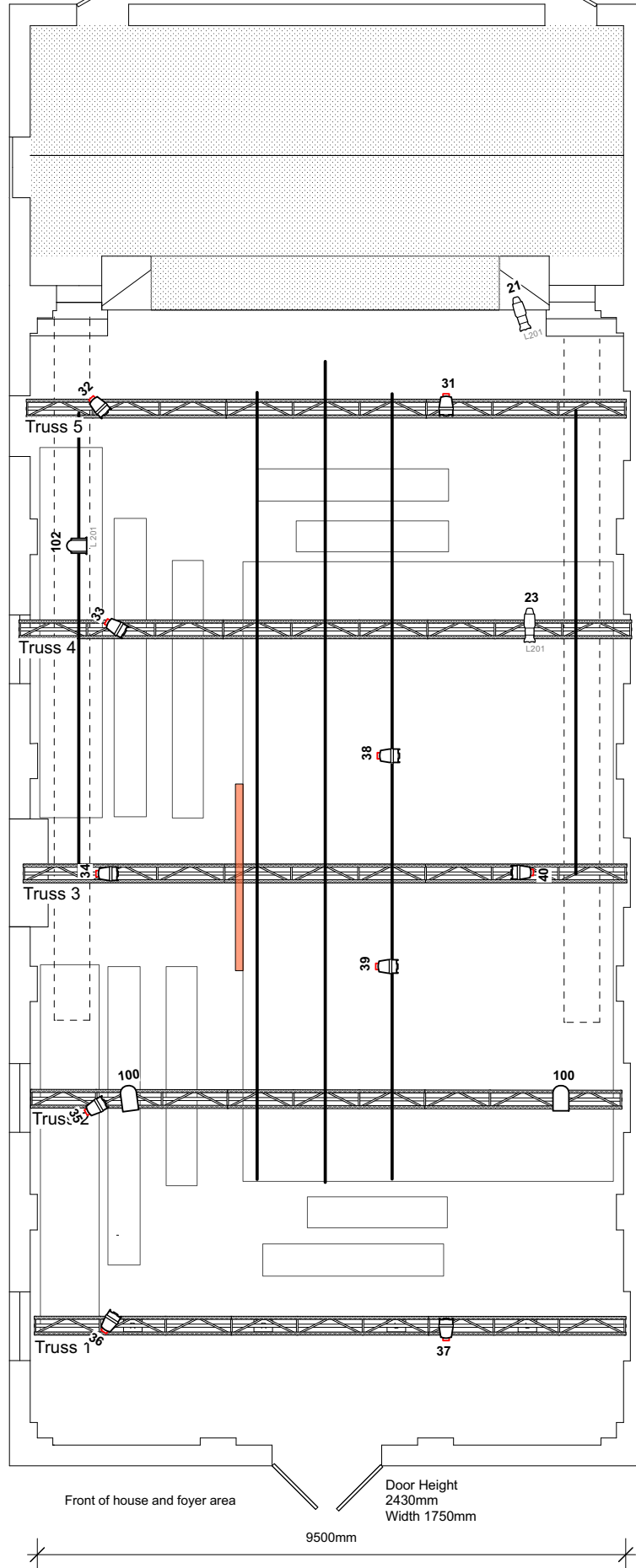
ARTIST PROVIDES

- Costumes
- Props - plastic water bottle, silver pebbles, flute head, silver necklace chain, pink plastic bag, aluminium sheet, iPhone
- Consumables - Vix vapour rub and water thickened with Xanthum Gum

Door height
2000mm
Width 840mm




Dressing rooms and kitchen area

SYLVIA STAEHLI THEATRE



4700mm

KEY

-  Philips Showline LED Par (all with barndoors) 10
 -  ETC Source4 36 Deg 2
 -  LED Strip 2m (double) 4
- CHANNEL 100 THR 102 ARE HLX

LX PLAN

SYNCWELL

Design: Giovanna Yate Gonzalez

DATE: 13/03/2026

NOT TO SCALE

V2

Front of house and foyer area

Door Height
2430mm
Width 1750mm

9500mm